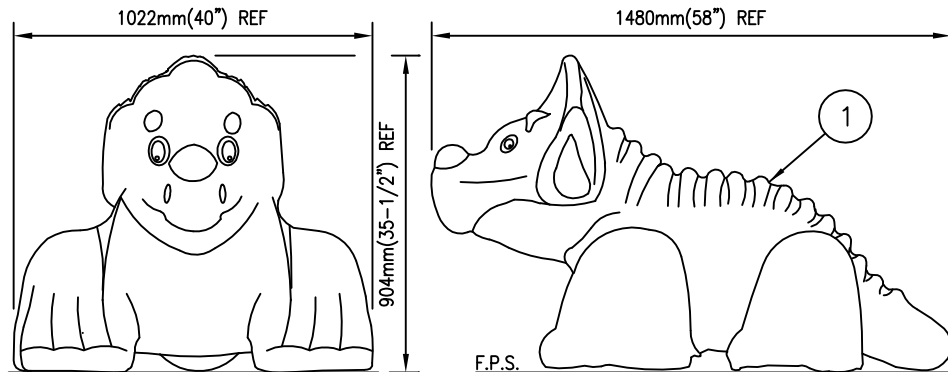
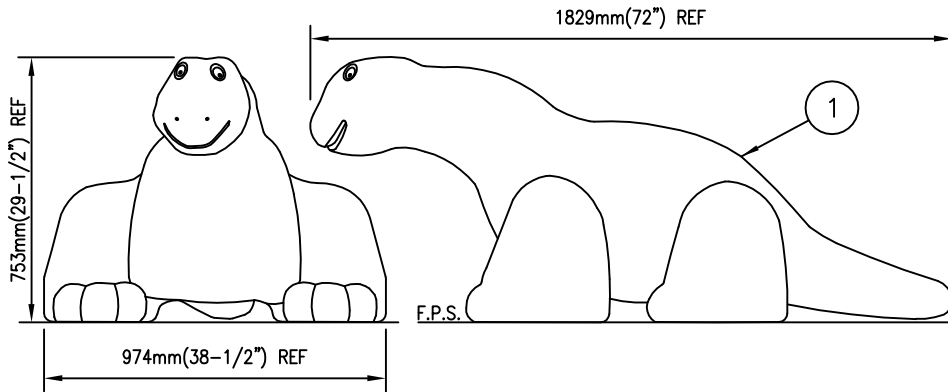




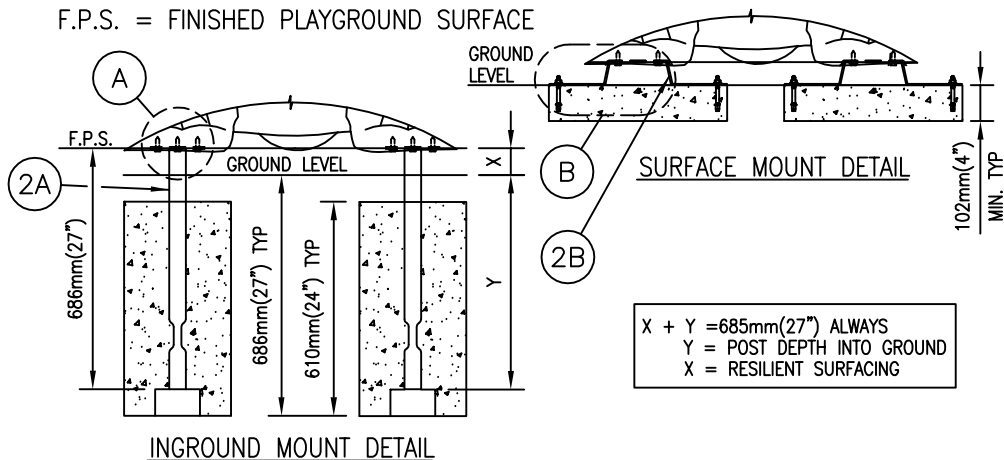
commercial play systems

DINOSAUR/TRICERATOPS (STATIONARY)

200024893
1900016D



F.P.S. = FINISHED PLAYGROUND SURFACE



DINOSAUR/TRICERATOPS (STATIONARY)

DINOSAUR - 200023370

TRICERATOPS - 200042281

INGROUND MOUNT

Item	Code	Description	Qty.
1	-	DINOSAUR OR TRICERATOPS	1
2A	200023327	BURIED POST F/DINOSAUR F/LOOSE FILL	4
3	200143960	SCREW LAG HEX 3/8" X 1-1/4" 18-8 S.S.	16
4	200002079	WASHER FLAT M11 23 X 12 X 1.6 (650012000)	16

SURFACE MOUNT

Item	Code	Description	Qty.
1	-	DINOSAUR OR TRICERATOPS	1
2B	200024672	PLATE SRFMT F/DINOSAUR	4
3	200143960	SCREW LAG HEX 3/8" X 1-1/4" 18-8 S.S.	8
4	200002079	WASHER FLAT M11 23 X 12 X 1.6 (650012000)	8
5	200001776	ANCHOR CONCRETE WEDGE M10 X 1.50 X 100mm	8

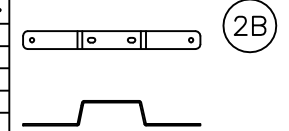
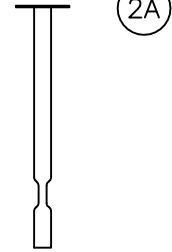
Application

- Recommended for ages 2-5 only.
- A resilient ground covering is required under and around all playevents.
- Cannot be installed under or above a deck.
- This component is an independent part and does not attach to a structure.
- If installing in conjunction with a structure, make sure the sculpture is installed outside of any use zones.
- A jiggle foot model is available. See dinosaur sculpture (jiggle foot) for details.

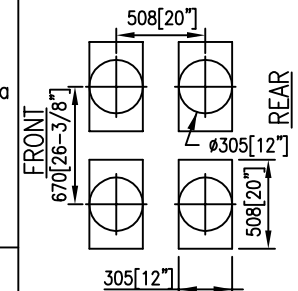
Installation Instructions

1. Determine the appropriate footing and prepare as shown in the footing detail. Do not install buried posts until STEP 4.
2. If installing an inground model, attach the buried post to the dinosaur as shown in detail A.
3. If installing surface mount model, attach the plate to the dinosaur as shown in detail B.
4. Lower buried posts into footing holes or attach plates to concrete footings as shown in the footing details.
5. Install finished playground surface.

AUTHORIZED BY:
Chris White 19AUG03



FOOTING LAYOUT



BOTH MODELS REQUIRE THE SAME FOOTING LAYOUT.

